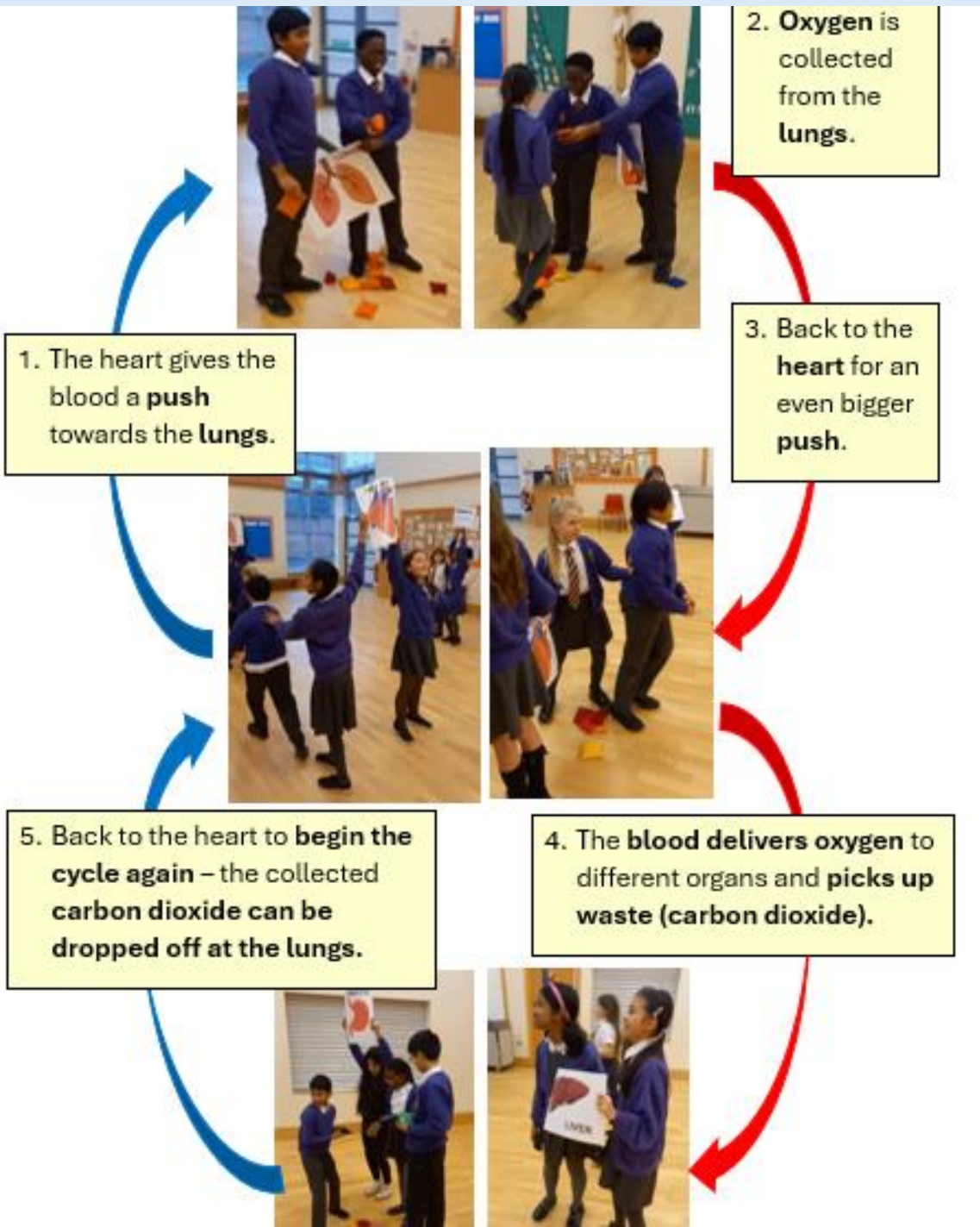


## Science – Animals including humans: The Circulatory system



We made a human model of the **circulatory system**.  
The red beanbags represented **oxygenated blood** and  
the blue beanbags represented **deoxygenated blood**.

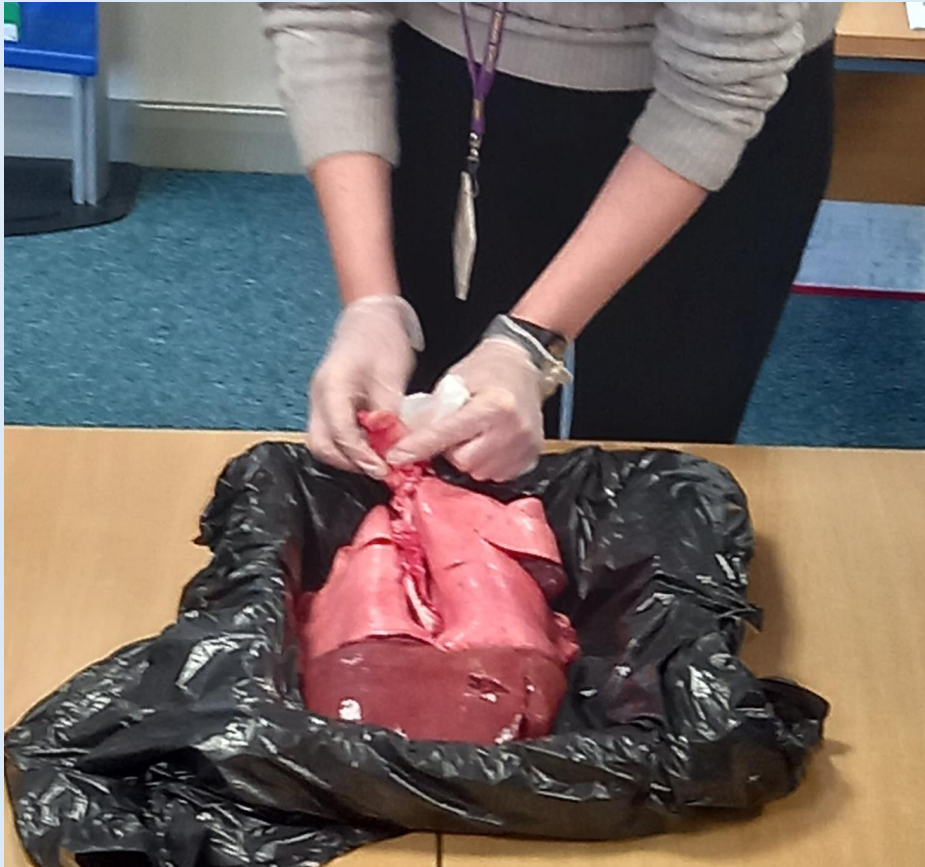
See twitter for video

<https://twitter.com/i/status/1747361568868753776>

# Science – Animals including humans: The Function of the Heart



We identified the oesophagus, lungs and liver and discussed where we thought the heart was positioned in our bodies.



We were surprised to find that the heart was tilted slightly to the left. We discussed its size and shape (not like the love-hearts ❤️ we thought of!). Then we looked at the arteries and veins that led to and from the lungs.



# Science – Animals including humans: The Function of the Heart

Miss Oliver demonstrated how to find the arteries and veins of the heart using an ox heart.



# Science – Animals including humans: The Function of the Heart

Using pipe cleaners, we identified which chamber of the heart each artery and vein led to/from in a pig/lamb heart.



# Science – Animals including humans: The Function of the Heart

